

WELDING APPLICATIONS

Indoor
1/8 – 20 Ton Capacity

Portable Cost Savings

Maximize your uptime and reduce water expenses with a recirculating chiller. The additional benefits of using a chiller can help protect the welding zone from surface distortion, avoid overheating the SCRs, improve welding tensile values, prevent electrodes from mushrooming, and extend the welding tip life.

Product Features

- Air-Cooled Condenser, Closed Loop
- High-Flow Process Feed Pumps
- Auto Make-Up/Reservoir Refill Kits
- External Fluid Filters
- Water or Water/Glycol (70/30)
- Fluid Setpoint 65–80°F
- Ambient Temperature Range 50–95°F
- Temperature Stability $\pm 3^{\circ}\text{F}$ (1.5°C)
- Built to UL 1995
- 18-Month Parts and Labor Warranty
- 24/7 Service and Support
- Next Day Parts Available

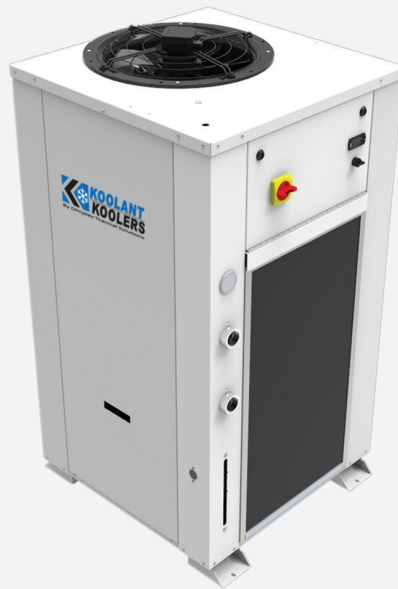
(Fluid temperatures and ambients can vary. Consult factory for the effect on capacity. Stated capacity based on 65°F fluid setpoint and 95°F ambient.)



Glen
Dimplex
Thermal
Solutions



**Koolant
Koolers**



Base Configuration

- Digital Controller
- Hermetic Compressor
- Brazed Plate Evaporator
- Manual Fluid Bypass Valve
- Hot Gas Regulator
- Discharge Fluid Pressure Gauge
- Seamless, Non-Pressurized, Plastic Tank
- Refrigerant and Tank Sight Glasses
- Flush-Mounted Fill Port
- Air Filter
- High-Flow Process Feed Pump
- Auto Water Fill to Maintain Water Level

Options

- Pressure Relief Bypass Valve (PRBV)
- Flow Switch for Flow Monitoring
- Anti-Backflow Kit
- Motorized Hot Gas Bypass Valve
- Float Switch to Detect Low Tank Fluids
- Insulation for Above 28°F Setpoint
- cUL Certification

| MODEL | CAPACITY | ELECTRICAL | FLA ^a | INLET/OUTLET PORT SIZE | TANK CAPACITY | UNIT DIMENSIONS (LxWxH) | CRATED WEIGHT | PUMP STANDARD | | PUMP FLOW UPGRADE ¹ | |
|------------|----------|------------|------------------|---------------------------|---------------|----------------------------|---------------|------------------|-----|-----------------------------------|-----|
| INDOOR | BTU/HR | VOLTS | AMPS | INCH | GAL | INCH | LBS | GPM | PSI | GPM | PSI |
| JHI-180-M | 2,100 | 115/1/60 | 10.6 | 1/2 | 5 | 21.125x22x28.625 | 290 | 2 | 50 | n/a | n/a |
| JHI-500-M | 4,500 | 115/1/60 | 15.5 | 1/2 | 5 | 21.125x22x28.625 | 345 | 4 | 50 | n/a | n/a |
| | | 230/1/60 | 8.0 | | | | | | | | |
| JHI-1000-M | 11,725 | 230/1/60 | 17.7 | 1/2 | 10 | 25.125x31.125x33.375 | 530 | 4 | 50 | 10 | 35 |
| | 11,300 | 230/3/60 | 13.6 | | | | | | | | |
| | 11,300 | 460/3/60 | 6.1 | | | | | | | | |
| JHI-1500-M | 18,000 | 230/1/60 | 24.0 | 1/2 | 10 | 25.125x31.125x33.375 | 570 | 4 | 50 | 10 | 35 |
| | | 230/3/60 | 16.8 | | | | | | | | |
| | | 460/3/60 | 7.5 | | | | | | | | |
| JHI-2000-M | 24,000 | 230/1/60 | 34.0 | 1/2 | 10 | 31.625x33.5x35.675 | 645 | 10 | 35 | 10 | 80 |
| | | 230/3/60 | 22.0 | | | | | | | | |
| | | 460/3/60 | 10.0 | | | | | | | | |
| SVI-5000-M | 60,000 | 460/3/60 | 16.0 | 1 1/2 | 36 | 34.5x37x65 | 1,100 | n/a | n/a | 40 | 45 |
| | | 230/3/60 | 29.0 | | | | | | | | |

a) Does not include pump upgrade.

1) Pump Pressure PSI Upgrade – in higher pressure applications this option is selected to allow pressure up to 75 PSI. Pressure relief bypass must be added with this option.

GDTS chillers can be configured to cool multiple welding applications. Contact GDTS to learn more about a central chiller.

