



WR2-10000-2P-NF-L-M-407c Split system fluid chiller, for use with Siemens Aera XJ; DTSWR2100MR45R, -MR45RC

Medical cooling applications

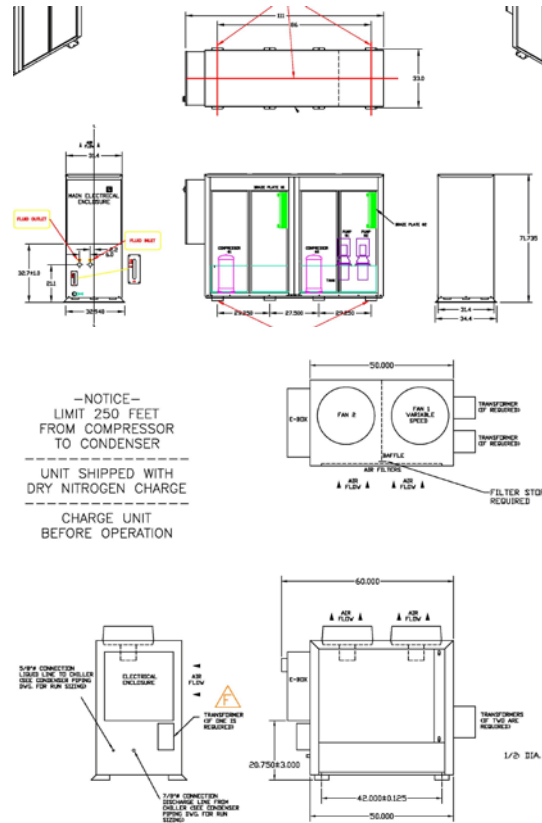
The Dimplex Thermal Solutions split system with indoor compressors, pumps and tank, and outdoor, air-cooled condensers, water/glycol chiller has been specially designed for medical applications to provide stable, fully dedicated cooling.

The DTS WR2-10000 was developed to meet the unique and varying heat load capacity requirements, maintaining tight temperature tolerances, while providing optimized energy usage, and reliable performance necessary for critical operation applications.

Features

- Dual 10 hp compressor, dual refrigerant circuits to smoothly transition through the 25 to 100% heat load capacity cycles of patient scanning and idling
- Energy savings and quiet operation when minimal cooling is required between patient use, and overnight for facilities located amongst residential areas
- Full capacity cooling enabling optimized utilization

- Dual, redundant fluid pumps, with automatic switch-over ensures no loss of flow
- **DTSWR2100MR45RC** – Coastal includes upgrade to stainless steel cabinet and e-coated condenser



*Includes two remote condensers



| | | |
|--|---------------|---|
| Chiller: | | WR2-10000-2P-NF-L-M-407c DTSWR2100MR45R & MR45RC |
| Net cooling capacity: | BTU/kW | 153,540/45 |
| Refrigerant: | | R407C |
| Coolant: | | Water/glycol 50/50 |
| Coolant outlet temperature: | °F/°C | 48/8.9 |
| Coolant temperature accuracy: | °F/°C | ± 1.8/ ±1.0 |
| Coolant flow: | GPM/LPM | 21 +/- 2 / 80 +/- 10 |
| Max. coolant pressure available: | Psi/Bar | 70/4.8 |
| Max. ambient temperature: | °F/°C | 122/50 |
| Min. ambient temperature: *Low Ambient model –MR45L | °F/°C | -20/-29 -40/-40 |
| Condenser air flow, approx.: | Cfm | 12000 |
| Tank capacity: | Gal/Ltr | 100/45 |
| Supply voltage: | V / Ph / Hz | 460/3/60 |
| Max. current consumption: | A | 55 45A indoor; 5A outdoor, each |
| Coolant connections: | NPTF | 2.0" |
| Indoor Cabinet Net weight (dry): | lb/kg | 1700/771 |
| width: | in/cm | 111/282 |
| height: | in/cm | 71.75/182 |
| depth: | in/cm | 34.4/88 |
| Outdoor Cabinets (includes two) net weight: | | 1000/454 (x2) |
| width: | in/cm | 60/152 |
| height: | in/cm | 75/191 |
| depth: | in/cm | 44/112 |

The solution to all your cooling needs.

2625 Emerald Drive, Kalamazoo, Michigan 49001

Phone: 800.968.5665 or 269.349.6800 Fax: 269.349.8951