

# SIEMENS HEALTHINEERS INTRODUCTION TO NEW DIMPLEX AIO CHILLERS

45, 63 & 100KW

MAY 11 & 28, 2026

# Agenda



**Quick Introduction to Dimplex  
Team**



**New Dimplex All-in-One (AIO)  
Chillers Models Include Coastal,  
Low Ambient, Seismic & IoT  
Connectivity**

**Photos**

**Footprint/Layout**

**Specifications**

**IoT Connectivity**

**Ordering Information**

**Refreshed Siemens Portal**



**Questions**

# Introduction to Dimplex Team

**Jacob Burkholder – VP Sales/Service**

**Ben Post – Project Engineer**

**Rachel Childers – Senior Service Manager**

**Maureen Basse – Manager of Service Execution**

**Michelle Ray – Inside Sales Representative**

**Tony Trumblee – Medical Account Manager**

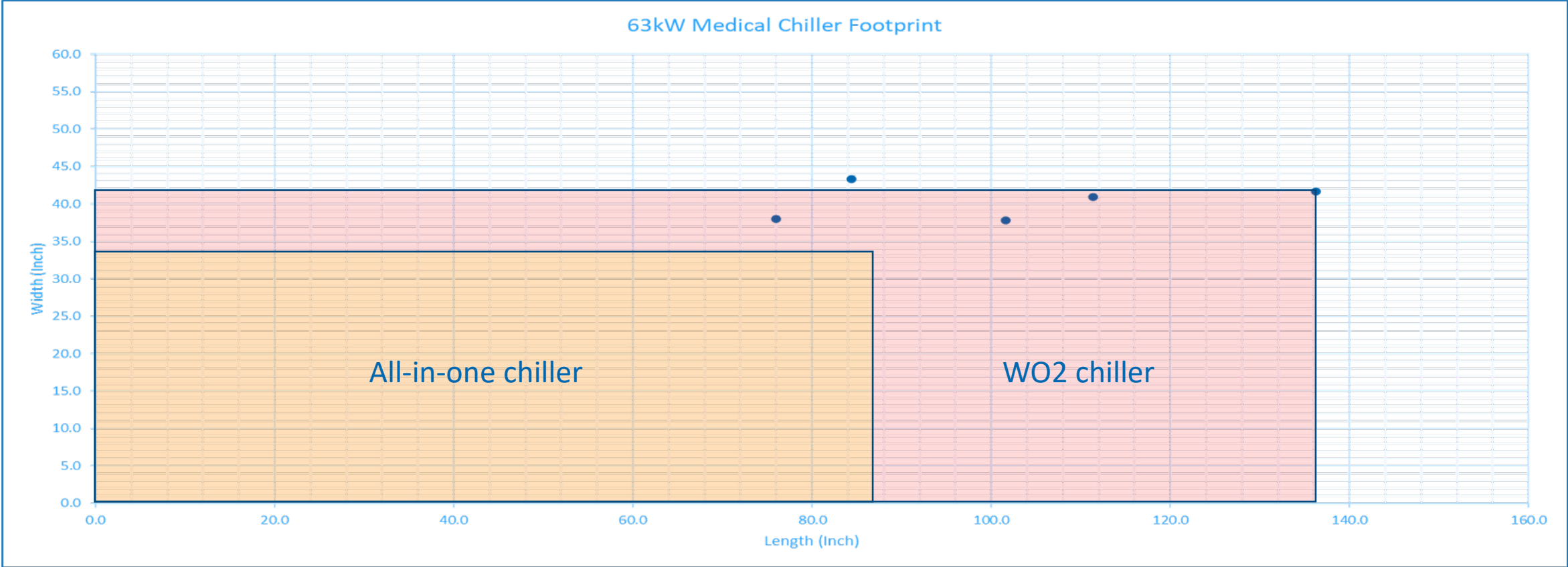


# AIO 45, 63 & 100kW Chiller Photos

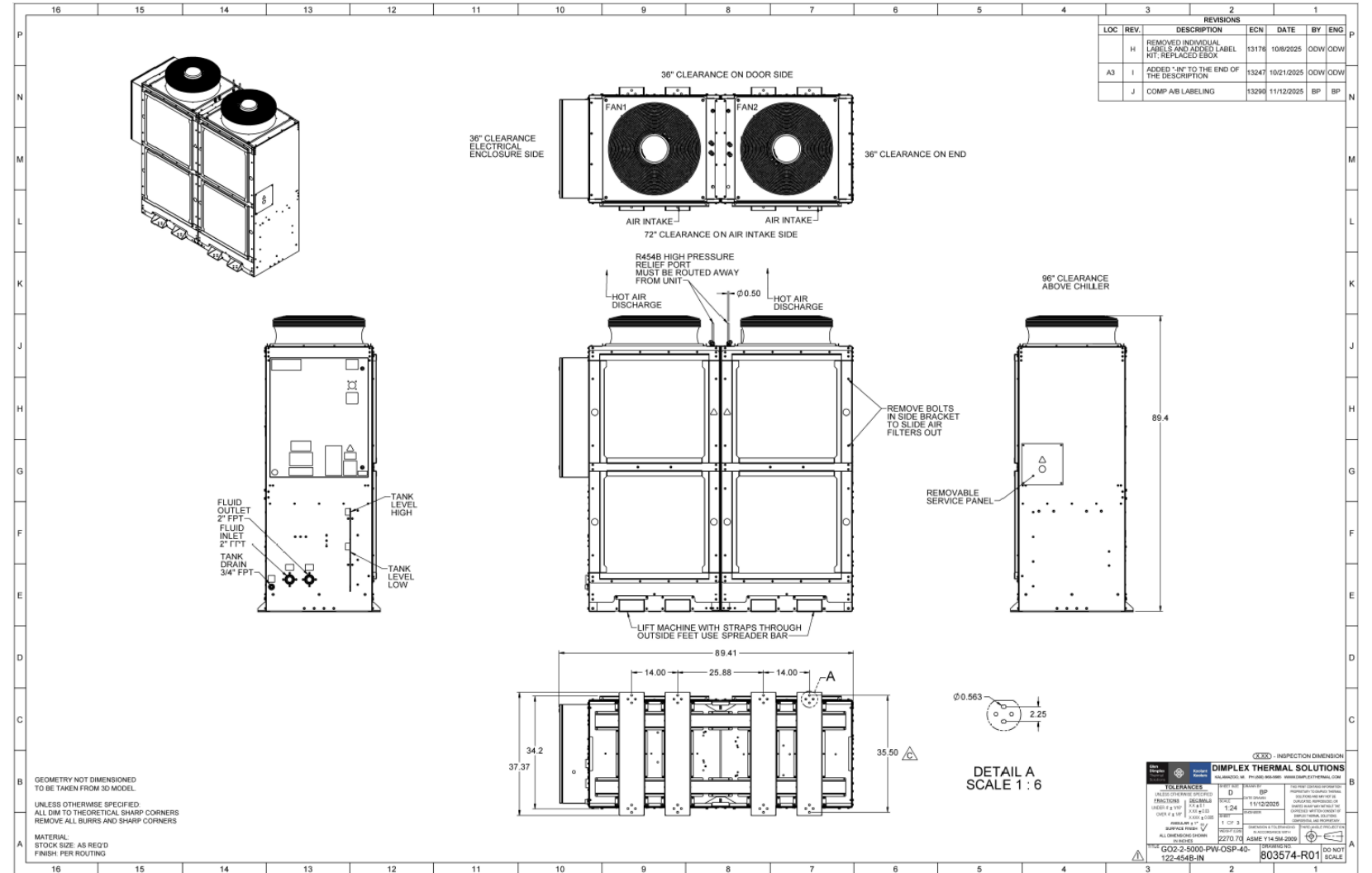
---



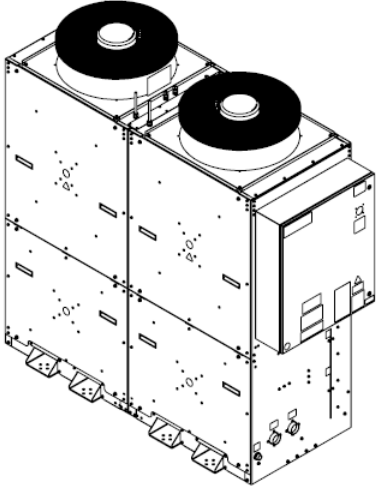

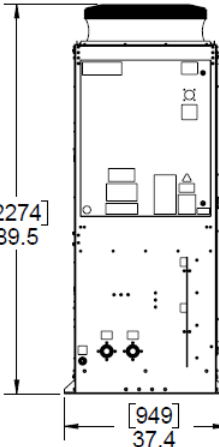
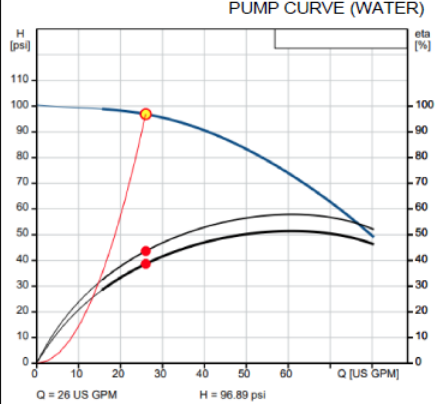
# 63kW Footprint – Old vs. New



# AIO Chiller Layout (63kW)



# Specifications (63kW)

	12	11	10	9	8	7	6	5	4	3	2	1																																																									
H	<b>DIMPLEX THERMAL SOLUTIONS GO2-2-5000-PW-OSP-40-122-454B-IN</b>											H																																																									
G	<table style="width: 100%; border: none;"> <tr> <td style="width: 30%;"><b>Technical Details</b></td> <td style="width: 30%;"></td> <td style="width: 30%;"></td> </tr> <tr> <td>· Cooling Capacity:</td> <td>214,965 btu/hr</td> <td>63 kW</td> </tr> <tr> <td>· Refrigerant:</td> <td>R454B (GWP: 466 AR4)</td> <td></td> </tr> <tr> <td>· Supply Temperature:</td> <td>40°F to 70°F</td> <td>4.4°C to 21.1°C</td> </tr> <tr> <td>· Temperature Stability:</td> <td>+/- 3°F</td> <td>+/-1.67°C</td> </tr> <tr> <td>· Flow Rate:</td> <td>26 to 35 GPM</td> <td>98.4 to 132.5 LPM</td> </tr> <tr> <td>· Coolant:</td> <td>Water/Glycol 30% - 50%</td> <td></td> </tr> <tr> <td>· Reservoir Volume:</td> <td>65 Gallons</td> <td>246 Liters</td> </tr> <tr> <td>· Connection Size:</td> <td>2" Female NPT</td> <td></td> </tr> <tr> <td>· Electrical Service:</td> <td>460V/3PH/60Hz</td> <td></td> </tr> <tr> <td>· Voltage Tolerance:</td> <td>+/- 10%</td> <td></td> </tr> <tr> <td>· Full Load Amps:</td> <td>75A</td> <td></td> </tr> <tr> <td>· Min. Circuit Ampacity:</td> <td>78A</td> <td></td> </tr> <tr> <td>· Max. Overcurrent Protection:</td> <td>90A</td> <td></td> </tr> <tr> <td>· Short Circuit Current Rating:</td> <td>10kA</td> <td></td> </tr> <tr> <td>· Sound Levels (+/- 2dBA):</td> <td>3 meter 80dB</td> <td></td> </tr> <tr> <td>· Dry Weight:</td> <td>2,200 lbs</td> <td>998 kg</td> </tr> <tr> <td>· Operational Weight:</td> <td>2,700 lbs</td> <td>1225 kg</td> </tr> <tr> <td>· Dimensions (WxDxH):</td> <td>80.1"(88.9" ebox) x 37.4" x 89.5"</td> <td>2034mm (2259mm ebox) x 949mm x 2274mm</td> </tr> </table>											<b>Technical Details</b>			· Cooling Capacity:	214,965 btu/hr	63 kW	· Refrigerant:	R454B (GWP: 466 AR4)		· Supply Temperature:	40°F to 70°F	4.4°C to 21.1°C	· Temperature Stability:	+/- 3°F	+/-1.67°C	· Flow Rate:	26 to 35 GPM	98.4 to 132.5 LPM	· Coolant:	Water/Glycol 30% - 50%		· Reservoir Volume:	65 Gallons	246 Liters	· Connection Size:	2" Female NPT		· Electrical Service:	460V/3PH/60Hz		· Voltage Tolerance:	+/- 10%		· Full Load Amps:	75A		· Min. Circuit Ampacity:	78A		· Max. Overcurrent Protection:	90A		· Short Circuit Current Rating:	10kA		· Sound Levels (+/- 2dBA):	3 meter 80dB		· Dry Weight:	2,200 lbs	998 kg	· Operational Weight:	2,700 lbs	1225 kg	· Dimensions (WxDxH):	80.1"(88.9" ebox) x 37.4" x 89.5"	2034mm (2259mm ebox) x 949mm x 2274mm	G
<b>Technical Details</b>																																																																					
· Cooling Capacity:	214,965 btu/hr	63 kW																																																																			
· Refrigerant:	R454B (GWP: 466 AR4)																																																																				
· Supply Temperature:	40°F to 70°F	4.4°C to 21.1°C																																																																			
· Temperature Stability:	+/- 3°F	+/-1.67°C																																																																			
· Flow Rate:	26 to 35 GPM	98.4 to 132.5 LPM																																																																			
· Coolant:	Water/Glycol 30% - 50%																																																																				
· Reservoir Volume:	65 Gallons	246 Liters																																																																			
· Connection Size:	2" Female NPT																																																																				
· Electrical Service:	460V/3PH/60Hz																																																																				
· Voltage Tolerance:	+/- 10%																																																																				
· Full Load Amps:	75A																																																																				
· Min. Circuit Ampacity:	78A																																																																				
· Max. Overcurrent Protection:	90A																																																																				
· Short Circuit Current Rating:	10kA																																																																				
· Sound Levels (+/- 2dBA):	3 meter 80dB																																																																				
· Dry Weight:	2,200 lbs	998 kg																																																																			
· Operational Weight:	2,700 lbs	1225 kg																																																																			
· Dimensions (WxDxH):	80.1"(88.9" ebox) x 37.4" x 89.5"	2034mm (2259mm ebox) x 949mm x 2274mm																																																																			
F	<table style="width: 100%; border: none;"> <tr> <td style="width: 30%;"><b>Ambient Air Conditions</b></td> <td style="width: 30%;"></td> <td style="width: 30%;"></td> </tr> <tr> <td>· Temperature Range:</td> <td>-40°F to +122°F</td> <td>-40°C to +50°C</td> </tr> <tr> <td>· Air Discharge:</td> <td>Vertical</td> <td></td> </tr> </table>											<b>Ambient Air Conditions</b>			· Temperature Range:	-40°F to +122°F	-40°C to +50°C	· Air Discharge:	Vertical		F																																																
<b>Ambient Air Conditions</b>																																																																					
· Temperature Range:	-40°F to +122°F	-40°C to +50°C																																																																			
· Air Discharge:	Vertical																																																																				
E	<table style="width: 100%; border: none;"> <tr> <td style="width: 30%;"><b>Certifications:</b></td> <td style="width: 30%;"></td> <td style="width: 30%;"></td> </tr> <tr> <td>· UL 60335</td> <td></td> <td></td> </tr> <tr> <td>· Seismic OSP-0867</td> <td></td> <td></td> </tr> </table>											<b>Certifications:</b>			· UL 60335			· Seismic OSP-0867			E																																																
<b>Certifications:</b>																																																																					
· UL 60335																																																																					
· Seismic OSP-0867																																																																					
D												D																																																									
C												C																																																									
B												B																																																									
A												A																																																									
	12	11	10	9	8	7	6	5	4	3	2	1																																																									

**Features:**

- Remote Display
- IOT (Cloud Connectivity)
- Coastal Protection:
  - Coil: 1000+Hrs Salt Spray ASTMB117
  - Powder Coated Sheet Metal
- Cleanable Air Filters with Metal Frames
- Redundant Refrigeration, Pumps, and Control System
- Adjustable Outlet Flow Control Valve
- Flow Switch for "no flow" detection.
- 100% Functional Test
- Low Tank Level Detection (Protects Pumps)
- Multi-Level Refrigeration without Hot Gas for better efficiency.
- Main disconnect w/ lockout/tagout.
- Wye Strainer for Fluid Filtration.

# IOT Connectivity



- AIO built on AWS IoT Infrastructure
- End-to-End Encryption
- Realtime Remote Monitoring
- Notifications for alarms and anomalies
- Long-term data storage and historical analysis





# AIO Chiller Ordering Information

---

## SIEMENS PART #'s :

DTSGO27500MR45

DTSGO225000MR63

DTSGO2210000MR100

## SIEMENS PART DESCRIPTION :

Dimplex AIO Chiller- 45kW, 63kW & 100kW

## SIEMENS B/E-TEXT:

45, 63 & 100kW Dimplex all-in-one chiller platform including coastal protection, low ambient, seismic rating and IOT connectivity. Water/glycol air-cooled heat exchanger/chiller package for outside installation. Features dual refrigeration circuits and dual redundant pumps. Unit includes fluid reservoir and controls as well as remote control display to monitor the heat exchanger package operation from indoors at the operator's workstation. The design meets the specification of OSHPD requirements. Required use with Siemens SEP cabinet.

- Two independent refrigeration circuits
- Two pumps – each supplies flow requirement
- Proprietary system intelligence for even and extended wear of each compressor
- Quick and easy maintenance and repair

Pricing also includes:

Service package including two start-up visits (one upon cold head start-up, one at commissioning), one PM visit during 12-month P&L warranty period.

One year warranty through Dimplex Thermal Solutions.

Customer is responsible for rigging and installation. Customer is responsible for providing glycol as specified by the manufacturer.

**Note: The filter flow meter kit will no longer be provided by Dimplex**



# Updated Siemens Web Portal

<https://www.dimplexthermal.com/en-us/resources/siemens-chiller-portal>



Applications

Products

Services

Parts

News

About

Contact Us

Resources

## Siemens Chiller Portal

If you have scheduled Chiller Start-Up Service, please send the downloadable checklist below 72 hours prior to start-up date to: [medicals@service@dimplexthermal.com](mailto:medicals@service@dimplexthermal.com)

\*Note: This portal is optimized for desktop and may not display properly on a mobile device.

DOWNLOAD START-UP CHECKLIST

37KW - 100KW MANUAL DOWNLOAD

INTRODUCTION TO DIMPLEX AIO CHILLER



### 45kW All-in-One Chiller

Siemens Part #:  
DTSGO27500MR45

45KW CUTSHEET

45KW LAYOUT

#### MAGNETOM

- Spectra
- Aera XJ
- Espreo
- Symphony
- Flow Series (Ace, Plus, Apex, Neo)



# QUESTIONS